

PENGEMBANGAN SISTEM TI

Continuous learning 
Keep up to date

PENGEMBANGAN SISTEM: Q&A

- Sistem apa yang akan kita kembangkan?
- Kapan kita akan kembangkan
- Siapa yang (bertugas) melaksanakan pengembangan
- Bagaimana kita melaksanakan pengembangan sistem
- Mengapa partisipasi kita penting selama pengembangan sistem

Continuous learning 
Keep up to date

WHO & HOW

- **WHO**
 - Insourcing
 - Selfsourcing
 - Outsourcing
- **HOW**
 - Traditional System Development Life Cycle
 - Prototyping
 - Application Software Package
 - Computer Aided Software Engineering (CASE)
 - Joint Application Development (JAD)

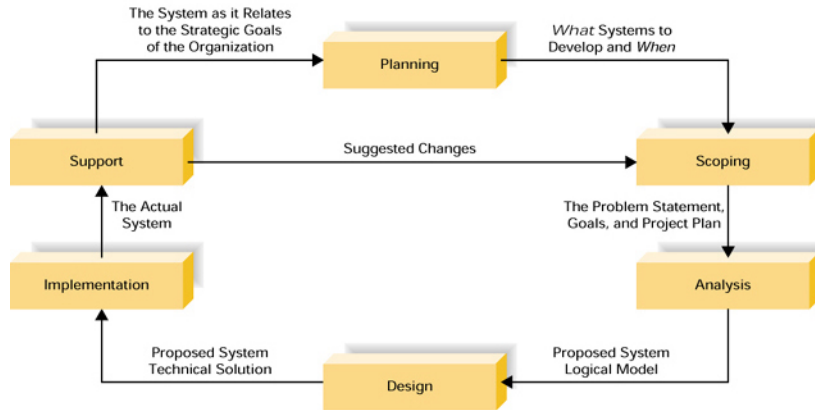
Continuous learning 
Keep up to date

INSOURCING & TRADITIONAL SDLC

- **Insourcing**
 - mencakup pemilihan IT specialist dalam organisasi untuk mengembangkan sistem
- **Traditional SDLC**
 - Sebuah pendekatan bertahap terstruktur guna pengembangan sistem yang membuat pemisahan tugas antara IT specialist dan knowledge worker

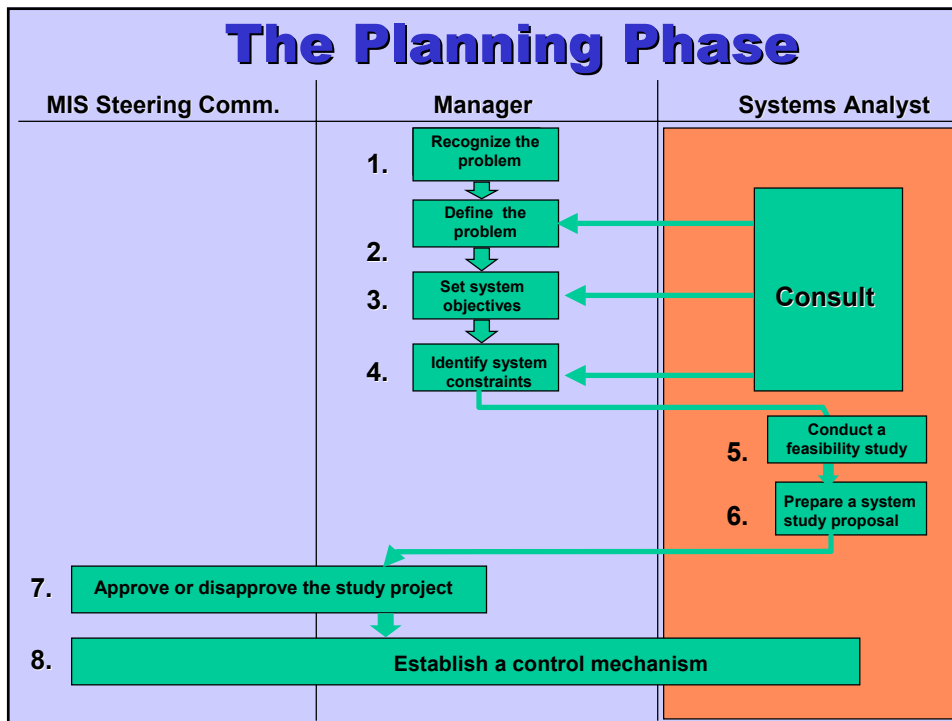
Continuous learning 
Keep up to date

6 LANGKAH SDLC

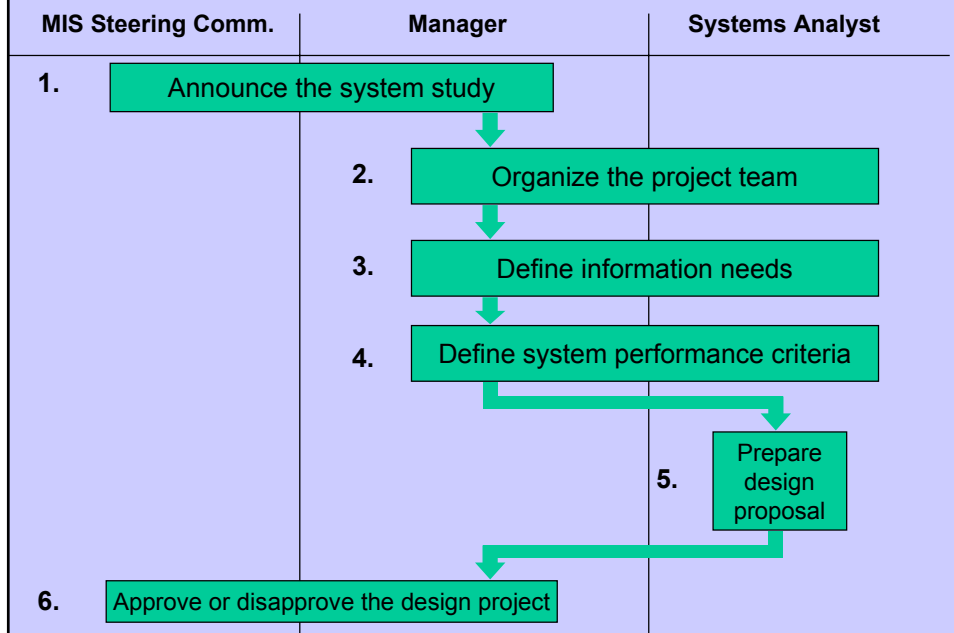


Continuous learning
Keep up to date

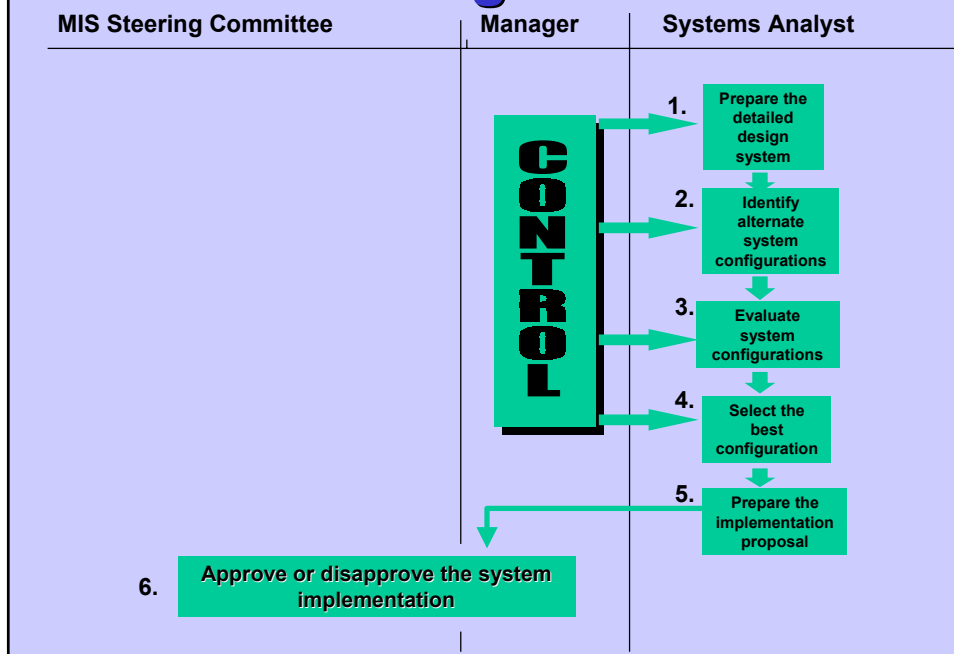
The Planning Phase



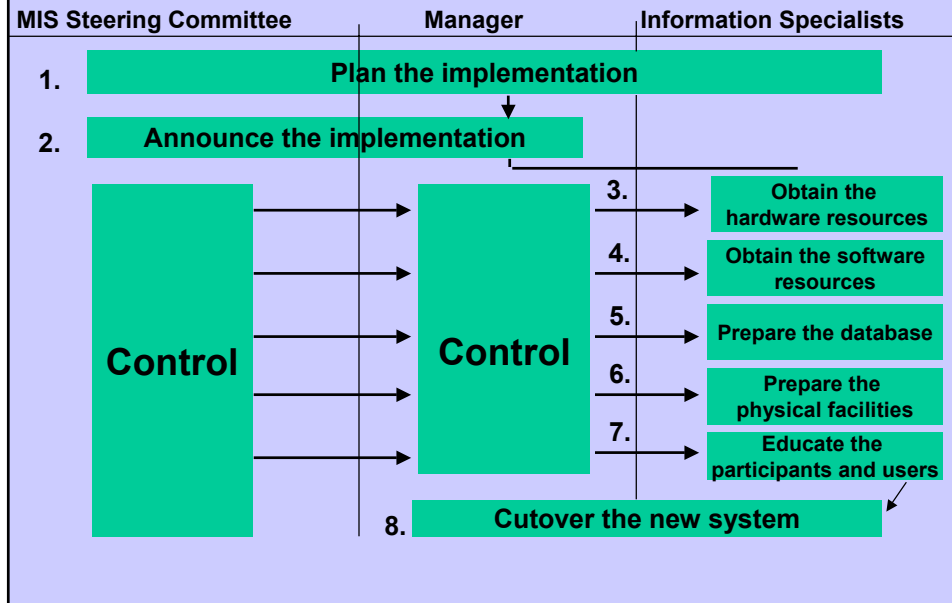
The Analysis Phase



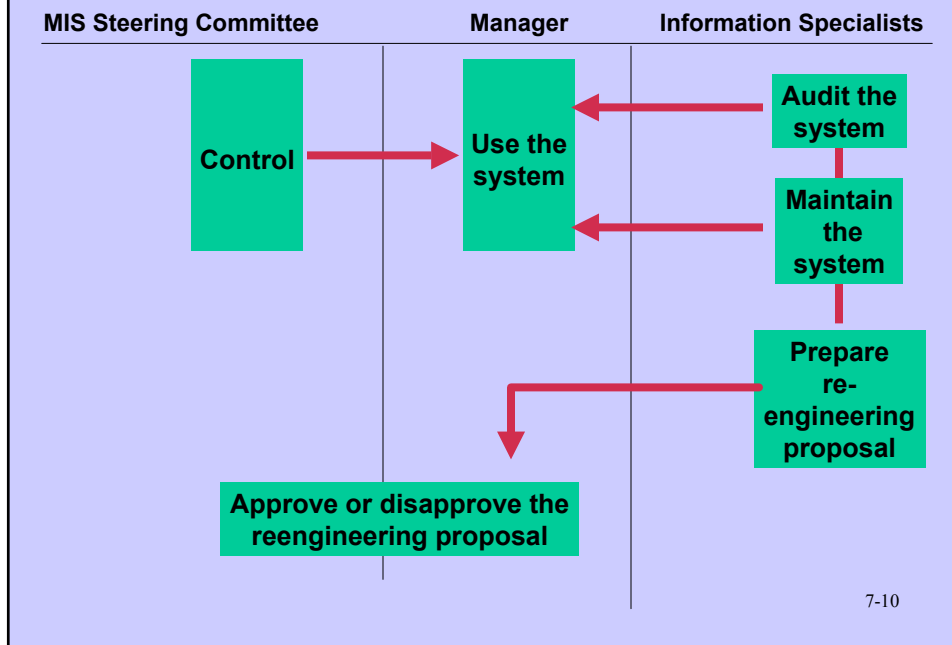
The Design Phase



The Implementation Phase

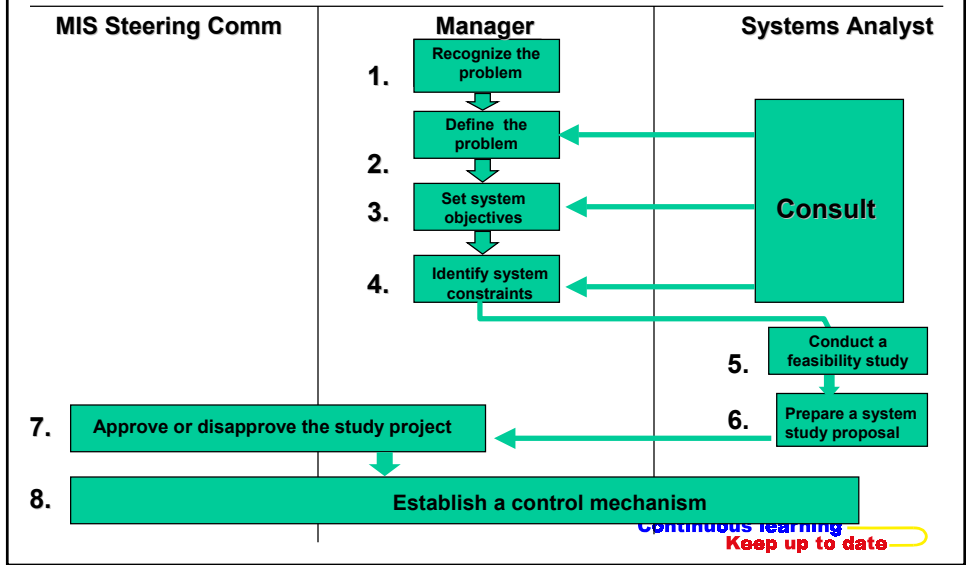


The Support Phase



7-10

Planning Phase



Outline of Study Proposal

1. Executive summary
2. Introduction
3. System objectives and constraints
4. Possible system alternatives
5. The recommended system study project
 - 5.1 Tasks to be performed
 - 5.2 Human resource requirements
 - 5.3 Schedule of work
 - 5.4 Estimated cost
6. Expected impact of the system
 - 6.1 Impact on the firm's organization structure
 - 6.2 Impact on the firm's operations
 - 6.3 Impact on the firms resources
7. General development plan (analysis, design, and implementation phase)
8. Summary

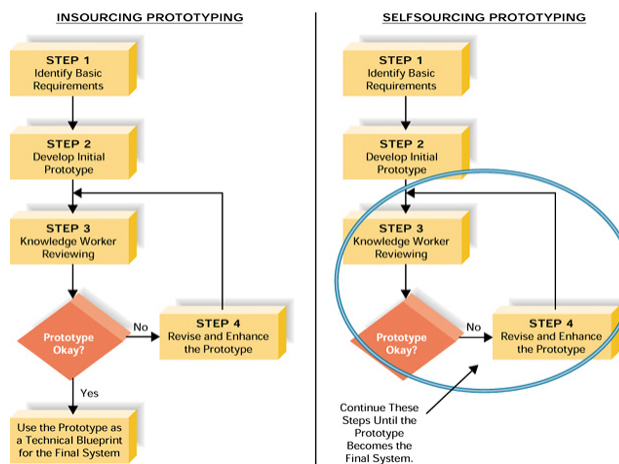
Continuous learning
Keep up to date

SELSOURCING & PROTOTYPING

- Selfsourcing adalah pengembangan dan dukungan sistem TI pada pengguna dengan sedikit/tanpa bantuan dari spesialis TI
- Prototyping adalah proses membangun model yang mendemonstrasikan kemampuan dari sistem yang dikembangkan

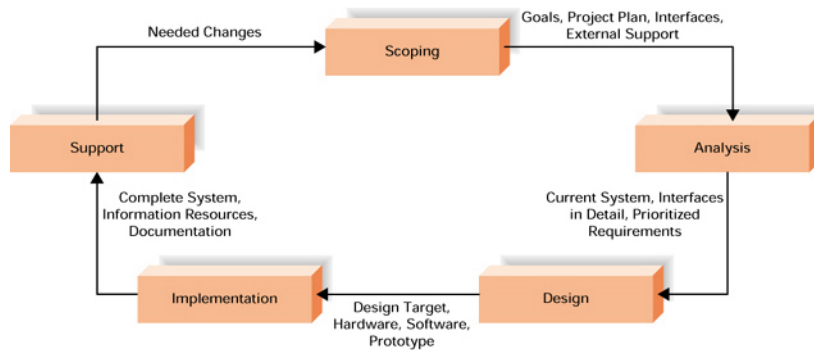
Continuous learning
Keep up to date

PROSES PROTOTYPING



Continuous learning
Keep up to date

PROSES SELFSOURCING



Continuous learning
Keep up to date

OUTSOURCING

adalah pendelegasian pekerjaan spesifik kepada pihak ketiga untuk masa waktu tertentu, rentang biaya tertentu dan pada tingkat layanan tertentu.

Continuous learning
Keep up to date

EVALUATION FACTORS

- Hardware evaluation factors
- Software evaluation factors
- IS Service evaluation factors

Continuous learning 
Keep up to date

HARDWARE EVALUATION

ITEM	RATING
Performance	
Cost	
Reliability	
Availability	
Compatibility	
Modularity	
Technology	
Ergonomics	
Connectivity	
Scalability	
Software	
Support	
OVERALL RATING	

Continuous learning 
Keep up to date

SOFTWARE EVALUATION

ITEM	RATING
Efficiency	
Flexibility	
Security	
Connectivity	
Language	
Documentation	
Hardware	
Other Factors	
OVERALL RATINGS	

Continuous learning 
Keep up to date

SERVICE EVALUATION

ITEM	RATING
Performance	
Systems Development	
Maintenance	
Conversion	
Training	
Backup	
Accessibility	
Business Position	
Hardware	
Software	
OVERALL RATING	

Continuous learning 
Keep up to date

TOOL & METODE LAIN

- Computer-Aided Software Engineering (CASE) Tools
- Joint Application Development (JAD) Workshop

Continuous learning 
Keep up to date

CASE TOOLS

- Computer-Aided Software Engineering (CASE) Tools mengotomasikan beberapa atau semua tahap SDLC
- CASE Tools membantu:
 - membuat model dan menyimpan sistem yang spesifik
 - mengkonversi informasi menjadi sebuah bentuk baru

Continuous learning 
Keep up to date

JOINT APPLICATION DEVELOPMENT (JAD)

sebuah workshop yang menyatukan manajemen, IT specialist, dan knowledge worker untuk mendefinisikan dan memerinci kebutuhan logikal dan alternatif teknis dari sebuah sistem yang diusulkan

Continuous learning
Keep up to date

RANGKUMAN

- **Siapa pengembang sistem TI:**
 - Insourcing
 - Selfsourcing
 - Outsourcing
- **Bagaimana sistem dikembangkan**
 - Traditional SDLC
 - Prototyping
 - CASE Tools
 - JAD

Continuous learning
Keep up to date